

RESOURCES FOR JOB SEEKERS



The global recession has hit Connecticut. Many families are worried about layoffs and how they'll make ends meet. In these difficult times, there is assistance available. On the back of this postcard is a list of services and contact information that might be useful to you, a family member, a friend or neighbor. Should you need further assistance, please don't hesitate to contact my office.

Employment Information Online

www.senatedems.ct.gov/Jobs



State Senator
Gary LeBeau

Representing East Hartford, East Windsor,
Ellington & South Windsor

State Capitol, Room 110
Hartford, Connecticut 06106-1591

Capitol: 240-0511

E-mail: LeBeau@senatedems.ct.gov

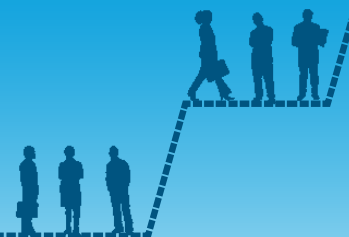
Web: SenatorLeBeau.cga.ct.gov

PRSRT STD
U.S. POSTAGE
PAID
HARTFORD CT
PERMIT NO. 3937



State Senator Gary LeBeau's RESOURCES FOR JOB SEEKERS

Web site links relating to many of the programs on this page can be found at www.senatedems.ct.gov/Jobs



CTWorks Career Centers

These are regional, one-stop career centers providing job skills development services, including: job search strategies; resume writing and critique; interviewing techniques; and career exploration. A career center is located at 3580 Main Street in Hartford to provide guidance and services to those seeking employment.

643-2222

CT Job and Career ConneCTION

Online resource for individuals seeking employment by providing self-assessment tools to find the right occupation, general information about various careers and various links to search for jobs and employers.

www.ctjobandcareer.org

CT JobCentral

An online job bank where individuals can search for jobs as well as upload their resume and access various employment-related information. www.jobcentral.org/ct

Unemployment Insurance

For information about unemployment insurance and benefits call the TeleBenefits number in Hartford.

566-5790

More Information Online

One-stop source for additional links to the programs described here and additional employment search engines and job postings. www.senatedems.ct.gov/Jobs

Where to Turn When Unemployed

The United Way of Connecticut has produced a document titled *"Where to Turn in Connecticut When You Become Unemployed."* It contains various resources for individuals who have just lost their jobs such as information regarding unemployment insurance, medical benefits, legal assistance, and help with job searches and money management. Contact my office at **240-0511** to receive this helpful publication or visit our Jobs Web page (see above) to download a copy.



Printed in Connecticut on 100% post-consumer recycled FSC-Certified paper manufactured entirely with Green-e certified wind-generated electricity. Please share or recycle when done.